

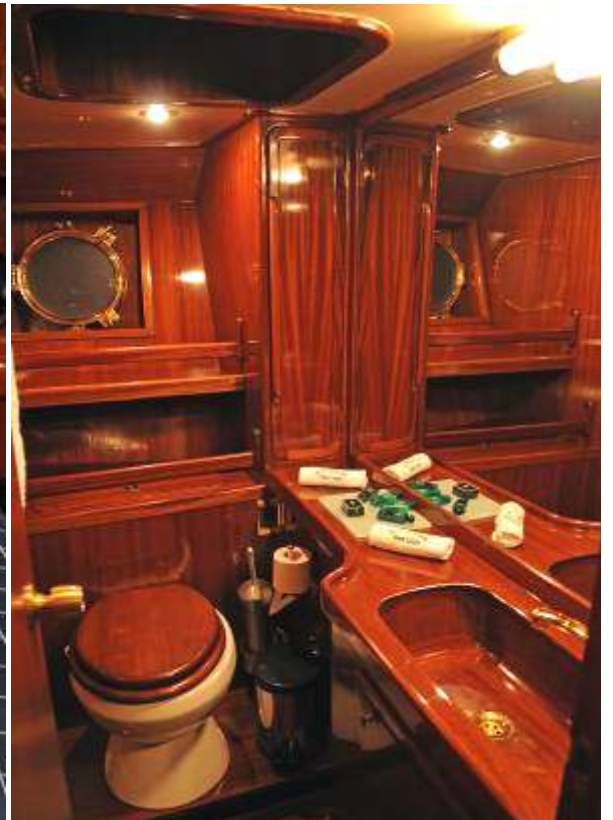


OFELIA

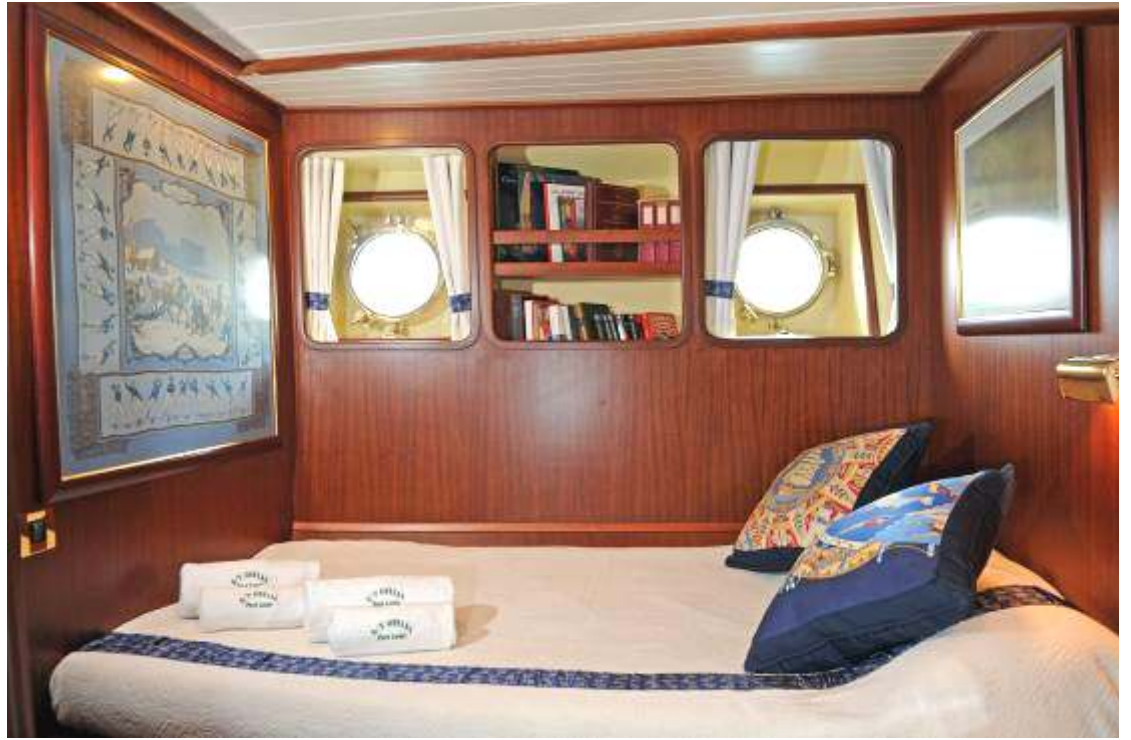
ADIC Turkey: 36m (118' 1"), 2000, 12 Guests.

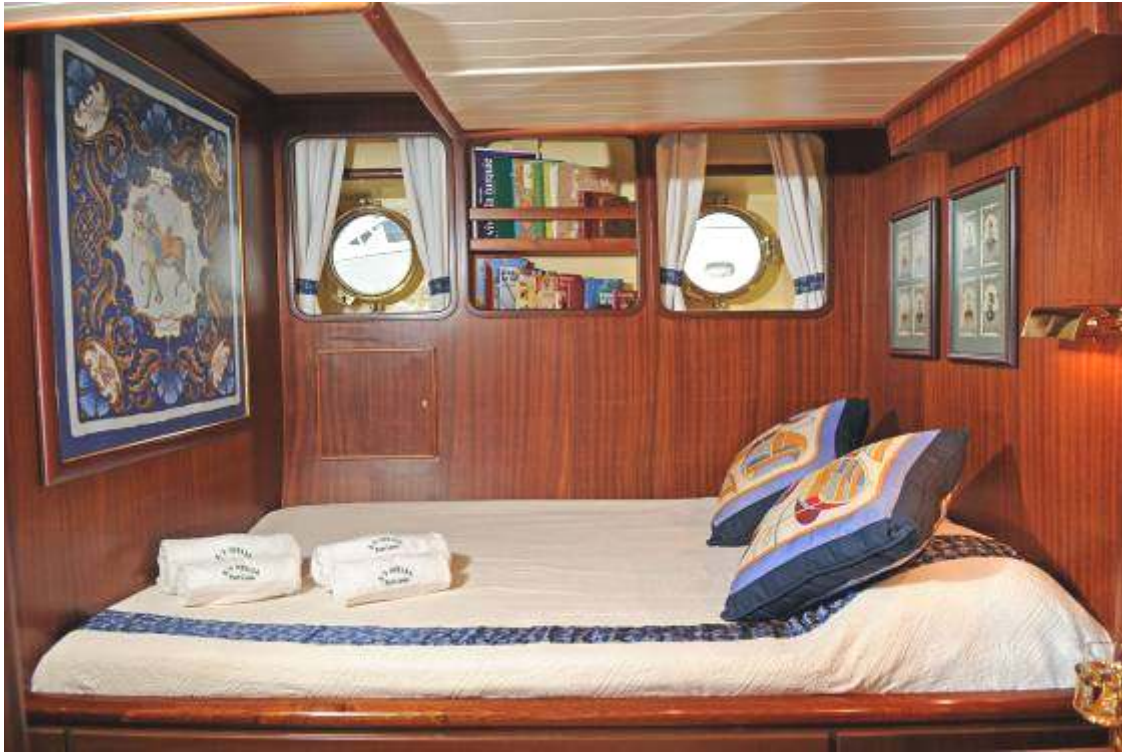














Specifications

Length: 36m (118'1")

Beam: 7.65m (25' 1")

Draft: 3.8m (12' 5")

Year Built: 2000

Builder: ADIC Shipyard Turkey

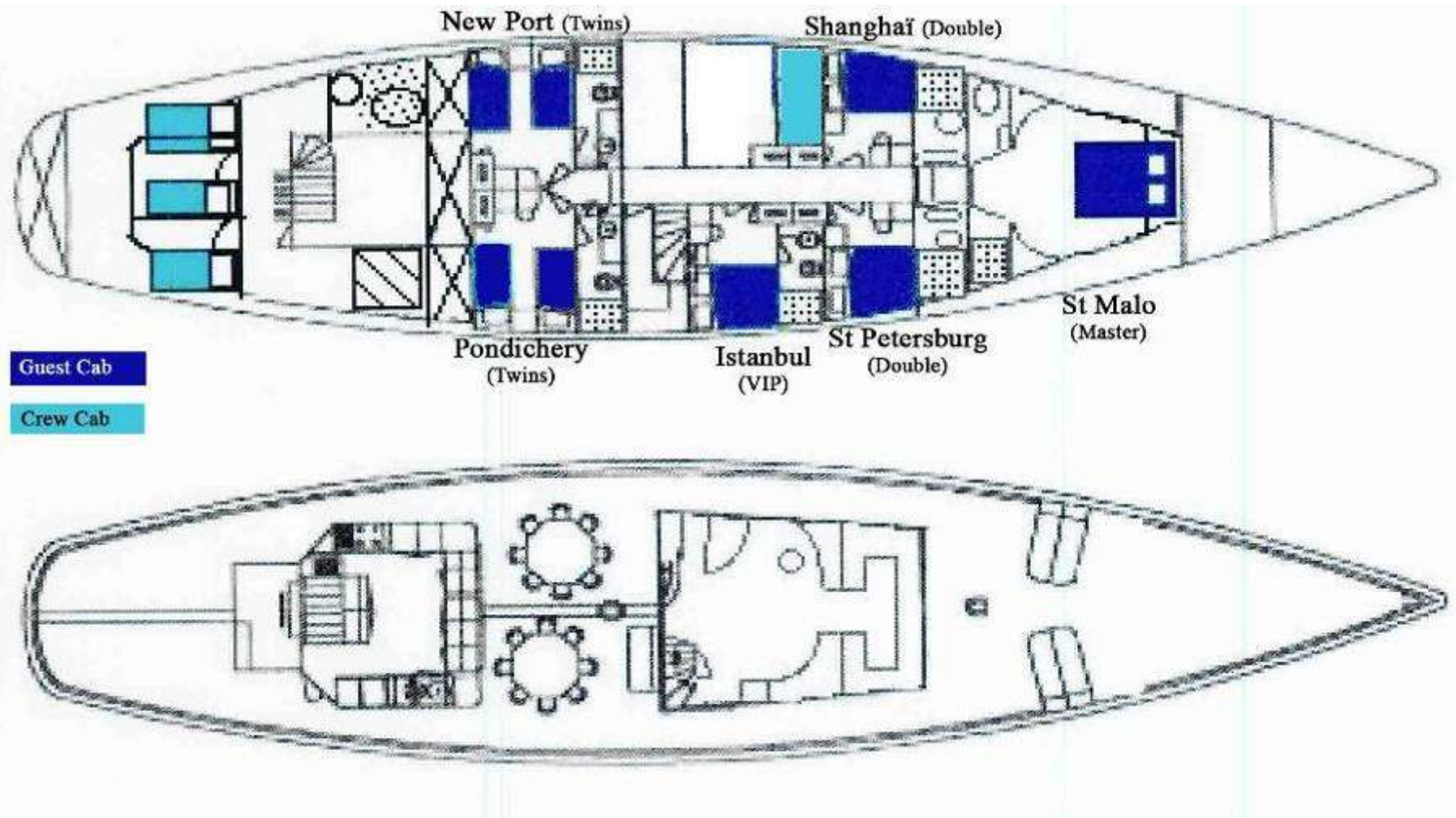
Accommodation

Guests (Sleeping): 12 in 6 cabins

Guests (Cruising): 23 during daytime cruising

Bed Configuration: (1 King, 3 Double, 4 Single)

Total Crew: 6



Tenders & Toys

4.8m Joker Speedboat with Suzuki 70hp o/b for guests

2.8m Joker tender with Mercury 4hp o/b for service

Tender launching system: Custom made with WARN electric winches

2 x Water-skis (can be used as mono-ski)

Tape; World Slalom tour (Rampage) Length: 167 cm; Beam: 17 cm

1 x Wakebord: Jobe 2020 141 cm

2 x Windsurf board: For Professional use, Make Fanatic.

Board 2.60 m; Mast 4.30 m; Wind ht 66.5; Volume: 130 lt; Sail

Spirit:Size 5.6 m; Luft: 4.28 m; Boom: 180 cm

2 x Ringo Jobbe for 2 people

Scuba equipment - rendezvous diving only - Mares 5 mm wearing;
b.si mares xl; Octopus, Scubapro r 190; Airvalve 200 psi; **ONLY ONE SET AVAILABLE**

4 sets of snorkeling gear

Fishing equipment

Mitchell rolling 1 x set; A variety of sea pulling hooks are available (Marlin, Barracuda...);

Paragardi 2 x sets

Deep sea fishing line and hook x 1 set

Jet Ski only available on request





S/Y OFELIA, perfect for events and regattas, is available in the East & West Med